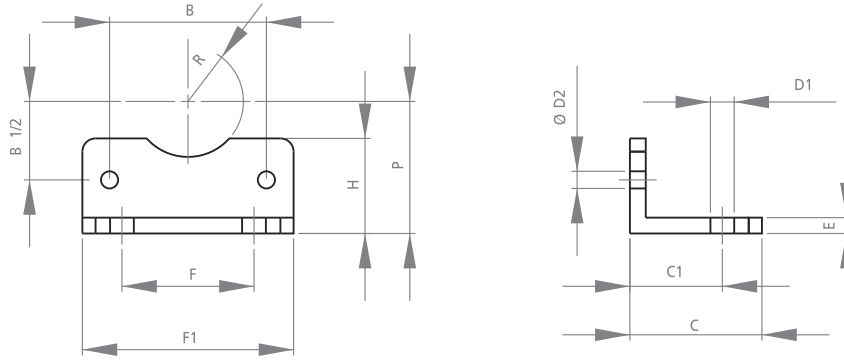
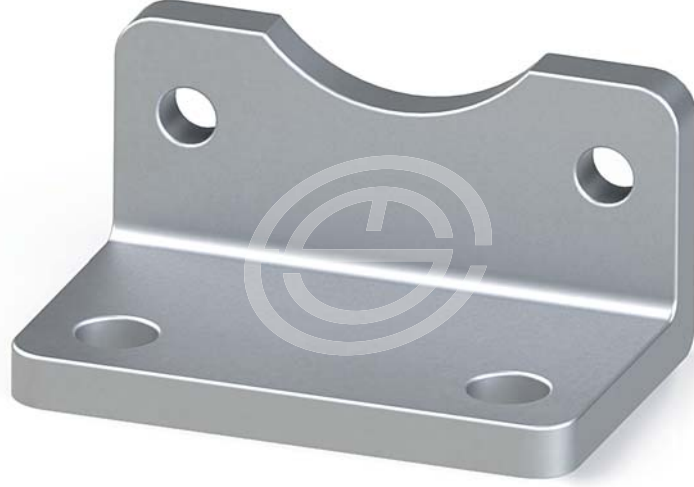




AYAK BAĞLANTI

FOOT MOUNTING

ISO



| SİLİNDİR Q mm CYLINDER | B | C | C1 | D1 | D2 | E | F | F1 | H | P | R |
|---------------------------|------|----|----|----|----|----|-----|-----|------|-----|------|
| AB 32 I | 32.5 | 35 | 24 | 7 | 7 | 4 | 32 | 45 | 31 | 32 | 15 |
| AB 40 I | 38 | 36 | 28 | 9 | 7 | 4 | 36 | 52 | 31.5 | 36 | 17.5 |
| AB 50 I | 46.5 | 47 | 32 | 9 | 9 | 5 | 45 | 65 | 37 | 45 | 20 |
| AB 63 I | 56.5 | 45 | 32 | 9 | 9 | 5 | 50 | 75 | 36 | 50 | 22.5 |
| AB 80 I | 72 | 53 | 41 | 12 | 11 | 6 | 63 | 95 | 47.8 | 63 | 22.5 |
| AB 100 I | 89 | 56 | 41 | 14 | 11 | 6 | 75 | 115 | 53 | 71 | 27.5 |
| AB 125 I | 110 | 70 | 45 | 16 | 13 | 8 | 90 | 139 | 80.5 | 90 | 30 |
| AB 160 I | 140 | 85 | 60 | 18 | 17 | 10 | 115 | 186 | 100 | 115 | 32.5 |
| AB 200 I | 175 | 95 | 70 | 24 | 17 | 12 | 135 | 220 | 121 | 135 | 37.5 |